

DROME

Refined meets rebellious. Identity in motion. Elegance as defiance.

For Fall/Winter 2026–27, DROME presents RE-SONANCE, a collection driven by an inner vibration — a contained tension that moves through the body and settles on the surface. This vibration shapes posture, gesture, and form, expressing a restrained sensuality that is sleek, controlled, and quietly seductive.

The collection explores identity as a fluid condition, shaped by instinct, presence, and transformation. Inspiration emerges from an eclectic cultural landscape. The faces and attitudes captured by Horst Friedrichs in *I'm One: 21st Century Mods* inform a contemporary vision of individuality and belonging. The intimate imagery of David Bowie during his Berlin years adds a sense of vulnerability, reinvention, and emotional precision. The radical layouts and typography of *Ray Gun* magazine, together with the inner-sleeve graphics of *Tattoo You* by The Rolling Stones — designed by Christian Piper and Peter Corrison — shape a visual language built on contrast, tension, and controlled distortion.

Sculptural and spatial references further deepen the material narrative. The morphing quality of

Ruth Fracken's work informs a vision of form in transformation, where boundaries shift, dissolve, and reconfigure. This influence translates into leather that appears to merge with the body, volumes that blur anatomical lines, and imagery charged with suspended motion. The interiors of Faye Toogood and Frank Gehry contribute a spatial sensibility defined by structure, scale, and emotional restraint.

At the core of RE-SONANCE lies a focused exploration of material.

Leather is shaped through craftsmanship into polished, tactile surfaces that hold tension and depth. Colour functions as a visual form. Surface becomes emotional contact. A strong relationship between body and garment defines the silhouettes. Bold, body-enveloping materials and sharp, structural shapes contain movement and articulate presence. The result is a precise, sensorial wardrobe defined by control, intensity, and magnetic stillness.

RE-SONANCE expresses transformation as a living state — an elegance shaped by vibration, morphing form, and instinct.

DROME — Collectors of Personalities.

MATERIALS

OPALINE NAPPA - PAPERCRUSH NAPPA - WILDBLEND SHEARLING - AIRLUXE NAPPA -
STRETCH CRUSHED NAPPA - SUPREME STRETCH PLUME - MEMORY VYNIL

COLOURS

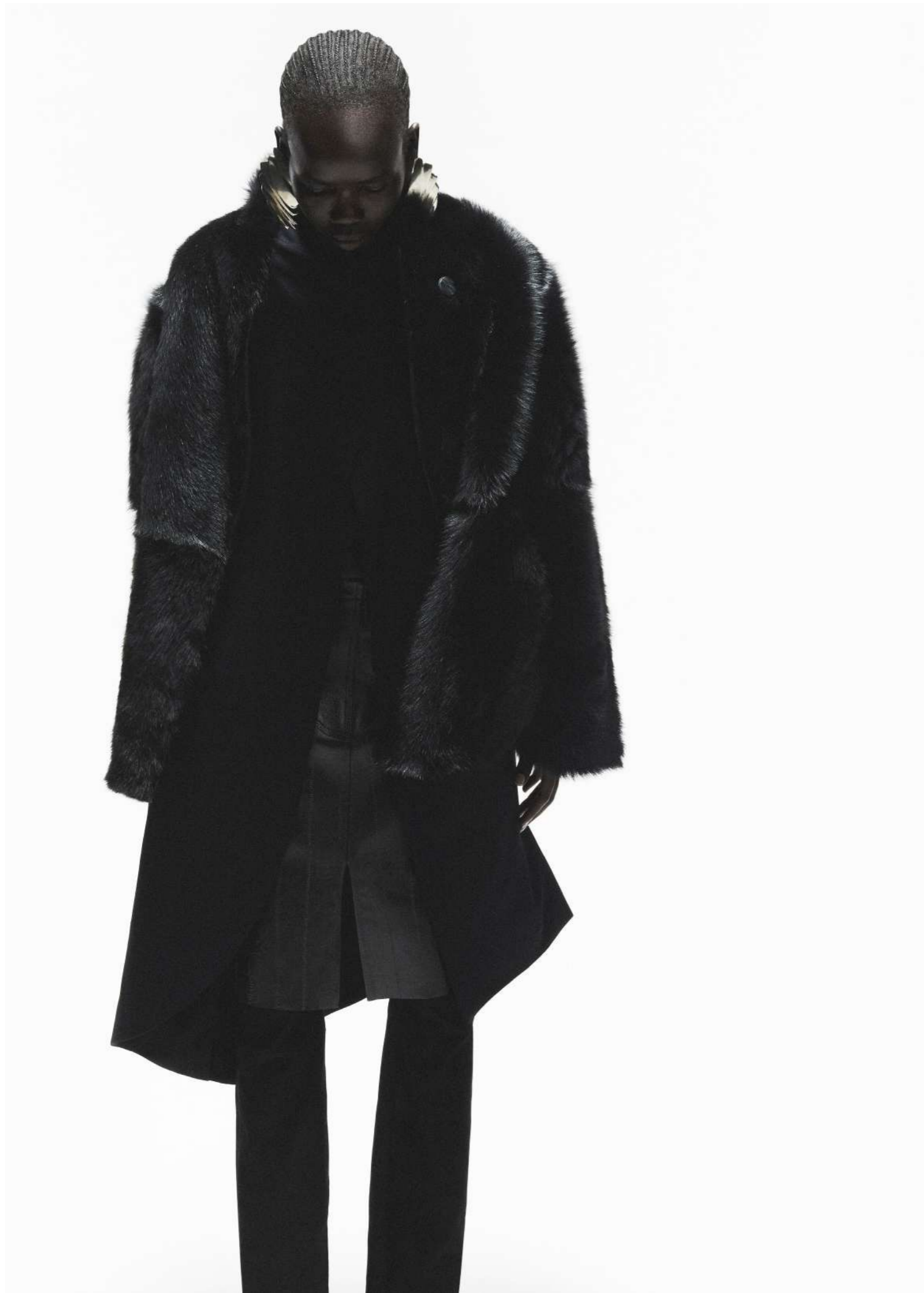
VAPOR GREY - NUDE - PLASTER -BLACK - NIGHT GARNET - OBSIDIAN DUST -
GLASS WHITE -MOONWATER - CHARCOAL



LOOK 1



LOOK 1



LOOK 2



LOOK 2



LOOK 3



LOOK 3



LOOK 4



LOOK 4



LOOK 5



LOOK 5



LOOK 6



LOOK 6



LOOK 7



LOOK 7



LOOK 8



LOOK 8



LOOK 9



LOOK 9



LOOK 10



LOOK 10



LOOK 11



LOOK 11



LOOK 12



LOOK 12



LOOK 13



LOOK 13



LOOK 14



LOOK 14



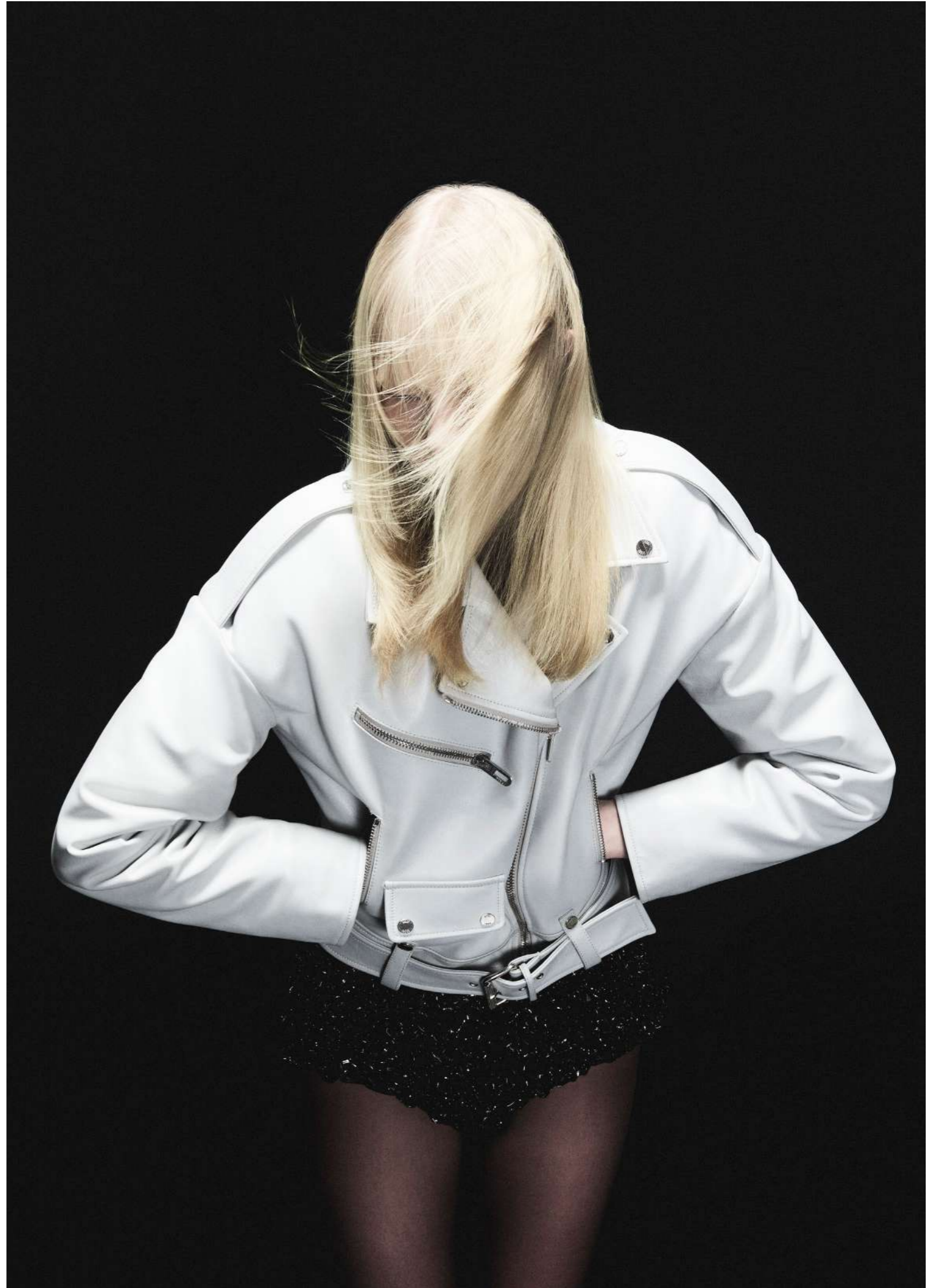
LOOK 15



LOOK 15



LOOK 16



LOOK 16



LOOK 17



LOOK 17



LOOK 18



LOOK 18



LOOK 19



LOOK 19



LOOK 20



LOOK 20



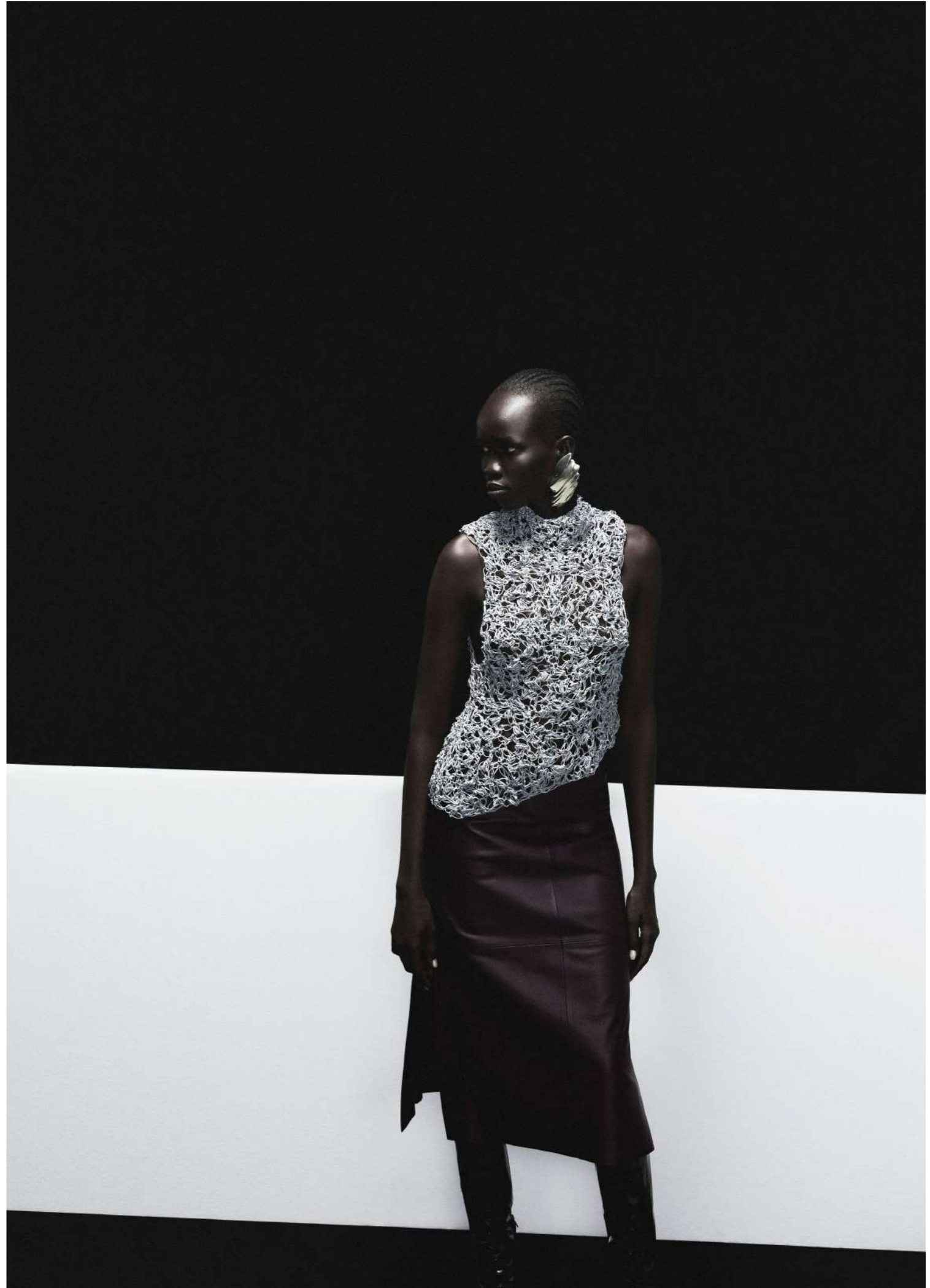
LOOK 21



LOOK 21



LOOK 22



LOOK 22



LOOK 23



LOOK 23

Creative Director
MARIANNA ROSATI

Art Director
LUCA NOTARFRANCESCO

Photographer
GABRIELE ROSATI at WALTER SCHUPFER MANAGEMENT

Styling
GIULIA REVOLO

Casting Director
EMMA MATELL

Hairstyling
DORA ROBERTI

Make-up
VANESSA GERACI

Talents
SIGNE MICHAELSSON at PREMIER MODEL MANAGEMENT
AKUEL MALONG at THE LAB MODELS

Producer
PAOLA MARIA LEONETTI

Sales Manager
ANTONIO SANTINELLI
A.SANTINELLI@DROME.IT
TEL +393758525459

Press Inquiries
PRESS@DROME.IT

RUSLAN ISSENOV
R.ISSENOV@INTERNO21MILANO.IT
TEL +393454728045

C/O SHOWROOM PHOENIX - VIA SIRTORI 26, MILANO

DROME